

SHOCKPULSE-SE

Advanced Dual-Action Lithotripsy for Superior Efficiency and Surgeon Comfort



SHOCKPULSE-SE LITHOTRIPTER

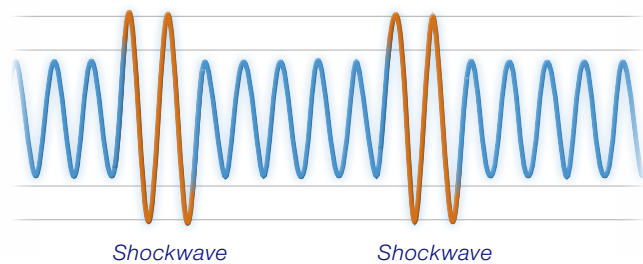
Revolutionary Technology for Superior Stone Clearance

The ShockPulse-SE is a novel, dual-action lithotripsy system that uses proprietary technology to achieve outstanding efficiency in stone fragmentation.

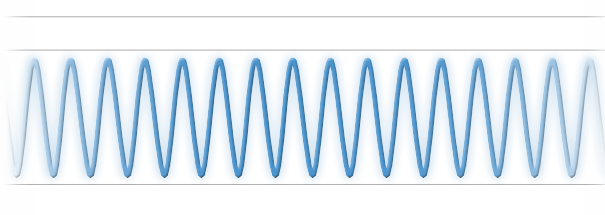
The Technical Principle:

Constant ultrasonic wave energy with intermittent ballistic shockwave energy at a high rate of occurrence never seen before (300 Hz).

ShockPulse-SE Technology



Standard Ultrasonic Vibration



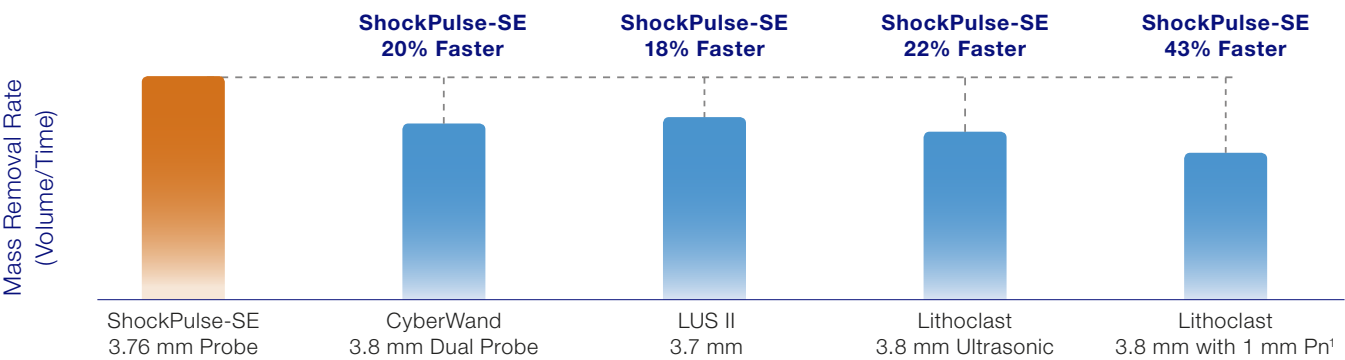
The Clinical Impact:

Outstanding drilling capabilities allowing you to safely fragment the hardest of stones in the shortest of times.

The Next Level of Lithotripsy: Fragment Aspiration Instead of Grasping

- Single probe design with large suction channel for removal of stone dust
- Effectively aspirates all stone sizes, shapes, and compositions, leading to greatly reduced procedure time

Mass Removal Comparison PCNL Probes* (Volume/Time)



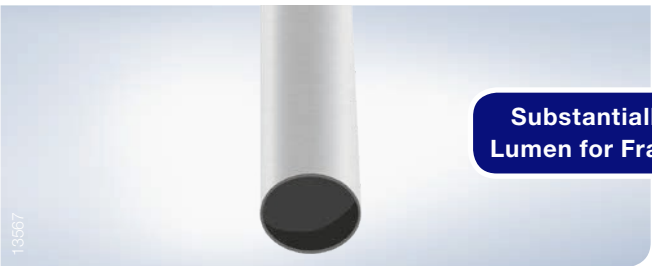
* Data on file

¹ Pn = pneumatic

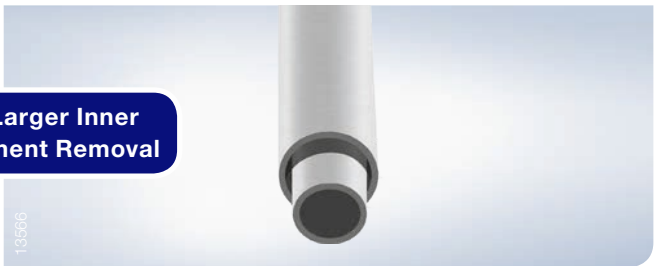
The ShockPulse Difference

Large, single-lumen probe quickly drills through all stone types, allowing continuous stone fragment removal.

ShockPulse-SE



Dual Probe Lithotripter



Substantially Larger Inner Lumen for Fragment Removal

The Clinical Impact:

Vacuums out stone fragments, reducing time spent chasing stones with graspers and baskets.

Hand Activation for Facilitated and Intuitive Surgeon Control

- Single handpiece design, no need to connect separate pneumatic and ultrasonic transducers
- New transducer hand activation eliminates the need for the footswitch
- Ergonomic placement of buttons allows for physician control during PCNL, URS, and bladder procedures
- Transducer maintains low surface temperature throughout entire procedure



Variable Suction Control

To allow the urologist to adjust suction flow - unique to ShockPulse-SE

Intuitive Button Operation

Reducing hand fatigue with easy-to-identify buttons for standard and high power mode

SHOCKPULSE-SE

■ Versatility to Satisfy All Clinical Needs

Expanded range of probe sizes available for PCNL, mPCNL, semi-rigid URS, and bladder stone procedures

■ Plug-and-Play System

No setup or tuning required – just one socket for superior ease of use



Ordering Information

Lithotripters

ShockPulse-SE Lithotripsy System

Catalogue No.	Description	Quantity
EGSPL-SR	Generator (SPL-G)	1
	Transducer (SPL-T)	1
	Nose Cone (SPL-NC)	1
	Wrench (SPL-W)	1
	Cleaning Stylet – Large (SPL-CSL)	1

ShockPulse-SE Lithotripsy Accessories

Catalogue No.	Description	Quantity
EGSPL-T	Transducer	1
EGSPL-FS	Footswitch	1
EGSPL-W	Wrench	1
EGSPL-NC	Nose Cone	1
EGSPL-CSL	Cleaning Stylet – Large	1

Sterile, Single Use – ShockPulse Lithotripsy Probes

Catalogue No.	Description	Length	Color	Probe Diameter	Application
EGSPL-PDBX376	ShockPulse Lithotripsy Probe, Sterile Single Use, (3/Box)	396 mm	Silver	3.76 mm (11.3 Fr)	PCNL / Bladder
EGSPL-PDBX340	ShockPulse Lithotripsy Probe, Sterile Single Use, (3/Box)	396 mm	Blue	3.40 mm (10.2 Fr)	PCNL / Bladder
EGSPL-PDBX183	ShockPulse Lithotripsy Probe, Sterile Single Use, (3/Box)	418 mm	Red	1.83 mm (5.5 Fr)	Mini PCNL
EGSPL-PDBX150	ShockPulse Lithotripsy Probe, Sterile Single Use, (3/Box)	564 mm	Green	1.50 mm (4.5 Fr)	URS
EGSPL-PDBX097	ShockPulse Lithotripsy Probe, Sterile Single Use, (3/Box)	578 mm	Gold	0.97 mm (2.91 Fr)	URS (no suction)

Reusable ShockPulse Lithotripsy Probes

Catalogue No.	Description	Length	Color	Probe Diameter	Application
EGSPL-PR376	ShockPulse Lithotripsy Probe, Reusable, (1/ea)	396 mm	Silver	3.76 mm (11.3 Fr)	PCNL / Bladder
EGSPL-PR340	ShockPulse Lithotripsy Probe, Reusable, (1/ea)	396 mm	Blue	3.40 mm (10.2 Fr)	PCNL / Bladder
EGSPL-PR183	ShockPulse Lithotripsy Probe, Reusable, (1/ea)	418 mm	Red	1.83 mm (5.5 Fr)	Mini PCNL
EGSPL-PR150	ShockPulse Lithotripsy Probe, Reusable, (1/ea)	564 mm	Green	1.50 mm (4.5 Fr)	URS
EGSPL-PR097	ShockPulse Lithotripsy Probe, Reusable, (1/ea)	578 mm	Gold	0.97 mm (2.91 Fr)	URS (no suction)

Specifications, design, and accessories are subject to change without any notice or obligation on the part of the manufacturer.

OLYMPUS

OLYMPUS EUROPA SE & CO. KG
 Postbox 10 49 08, 20034 Hamburg, Germany
 Wendenstrasse 14–18, 20097 Hamburg, Germany
 Phone: +49 40 23773-0, Fax: +49 40 233765
 www.olympus-europa.com

