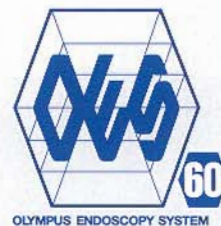


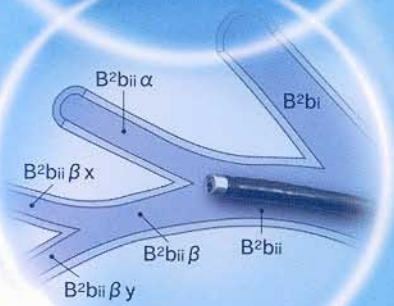
**OLYMPUS**<sup>®</sup>

Your Vision, Our Future



OES Bronchofiberscope  
**OLYMPUS BF TYPE XP60**

Enhanced insertion capability takes you further  
into the peripheral bronchi

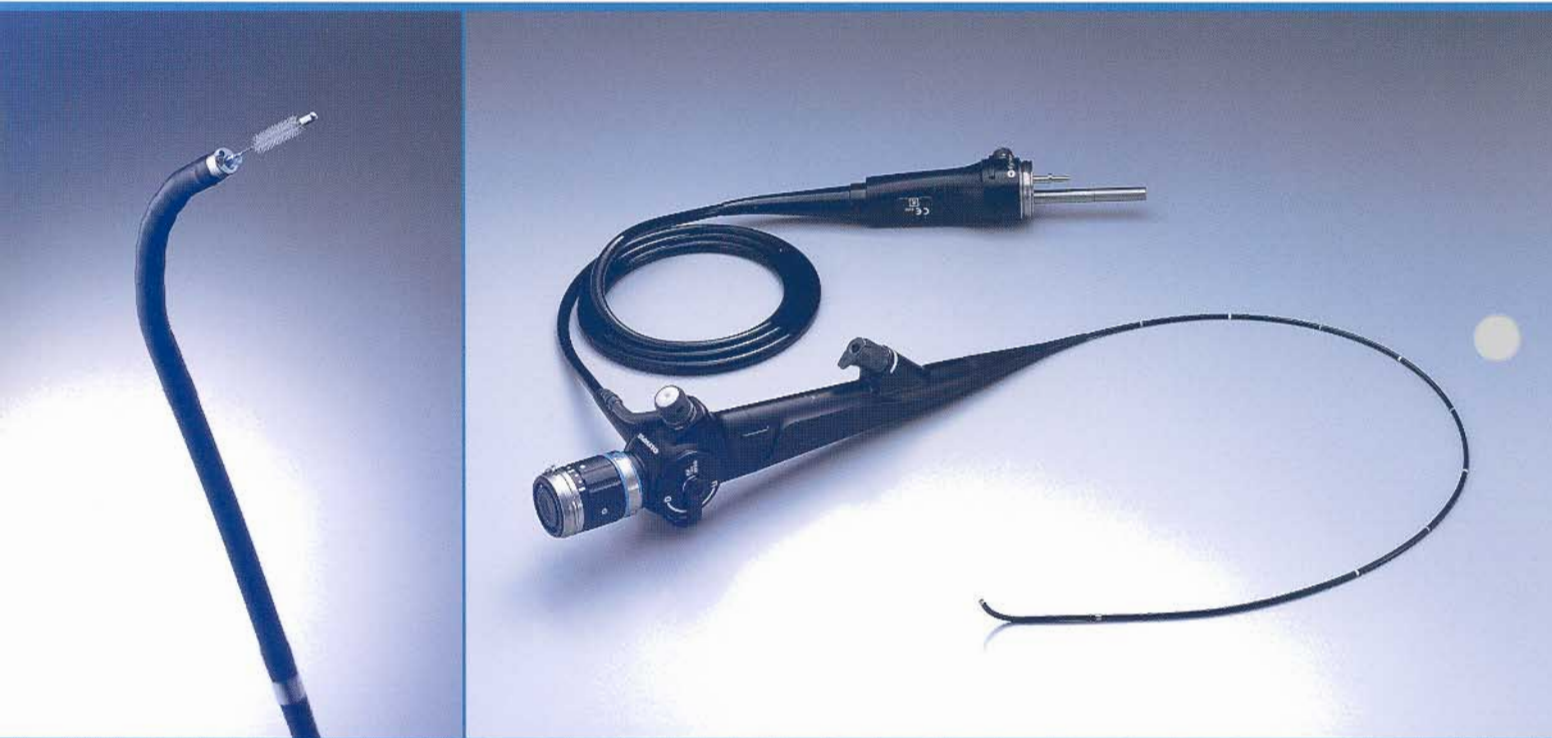


OES Bronchofiberscope

# OLYMPUS BF TYPE XP60



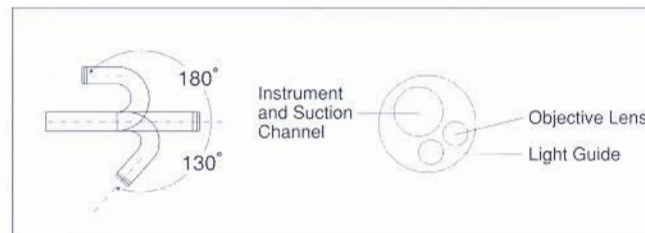
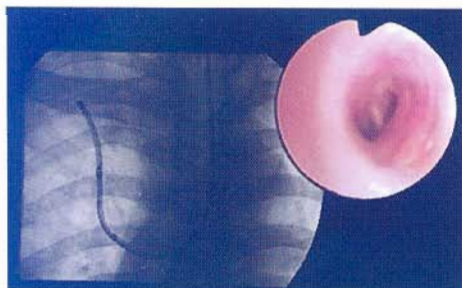
## Super-slim 2.8 mm scope with reduced bending radius section takes you deeper into the peripheral bronchi



- Unprecedented insertion capability with a shorter bending radius than the preceding model and an extra-slim design that's only 2.8 mm across at both the distal end and insertion tube allows you to reach even the peripheral bronchi.
- In spite of the slim design, the instrument channel measures 1.2 mm across.
- Wide 90° field of view enables accurate observation of a wider area.
- 180° up / 130° down angulation for easier maneuvering in the bronchi.
- 600 mm working length ideal for use in the tracheobronchial tree.
- Compatible with both OES and EVIS video systems.

### ■ Specifications

Optical System	Field of view	90°
	Direction of view	0° (Forward viewing)
	Depth of field	2~50mm
Insertion Tube	Distal end outer diameter	2.8mm
	Insertion tube outer diameter	2.8mm
	Working length	600mm
Instrument Channel	Channel inner diameter	1.2mm
	Minimum visible distance	1.5mm from distal end
Bending Section	Angulation range	Up180°, Down130°
Total Length		910mm



Specifications, design and accessories are subject to change without any notice or obligation on the part of the manufacturer.

## OLYMPUS®

**OLYMPUS CORPORATION**  
Shinjuku Monolith, 3-1 Nishi-Shinjuku 2-chome, Shinjuku-ku, Tokyo 163-0914, Japan  
**OLYMPUS WINTER & IBE GMBH**  
Kuehnstrasse 61, 22045 Hamburg, Germany  
**OLYMPUS EUROPA GMBH**  
Postfach 10 49 08, 20034 Hamburg / Wendenstrasse 14-18, 20097 Hamburg, Germany  
**OLYMPUS AMERICA INC.**  
2 Corporate Center Drive, Melville, N.Y. 11747-3157, U.S.A.  
**OLYMPUS LATIN AMERICA, INC.**  
6100 Blue Lagoon Drive, Suite 390 Miami, Florida 33126-2087, U.S.A  
**KEYMED LTD.**  
Keymed House, Stock Road, Southend-on-Sea, Essex SS2 5QH, England

**OLYMPUS SINGAPORE PTE LTD.**  
491B River Valley Road #12-01/04 Valley Point Office Tower, Singapore 248373  
**OLYMPUS HONG KONG AND CHINA LIMITED**  
Room 1520-1527, Ocean Centre, 5 Canton Road, Tsimshatsui, Kowloon, Hong Kong  
**OLYMPUS BEIJING REPRESENTATIVE OFFICE**  
Room 1401, East Tower, Gong Yuan No6 Royal Palace, No6 Gong YuanXia, JianGuoMenNei, DongCheng District, Beijing, 100056, China  
**OLYMPUS MOSCOW LIMITED LIABILITY COMPANY**  
117071, Moscow, Malaya Kaluzhskaya 19, bld. 1, fl.2, Russia  
**OLYMPUS AUSTRALIA PTY LTD.**  
31 Gilby Road, Mount Waverley, VIC., 3149, Australia

www.olympus.com

Printed in Japan R397SB-0604