

TJF-Q190V Duodenoscope

Supporting Your Standard of Care



Main Features

Improved Cannulation Efficiency

Square image shape and 15° backward viewing allow for expanded field of view and better view direction, improving cannulation efficiency.

Reliable Guidewire Locking

Facilitates fast and secure short guidewire locking with dual system at the distal end.

High Force Transmission

Enables a 1:1 transfer of pushing and rotating forces to the distal end of the duodenoscope, improving ergonomics and scope responsiveness.

NBI (Narrow Band Imaging)

NBI with TJF-Q190V is significantly brighter and provides contrast, which may aid in the interpretation of mucosal and vascular patterns of the papilla.

Single-Use Distal Cover

The MAJ-2315 single-use distal cover allows better access for reprocessing accessories during manual cleaning. The cover is transparent and is destroyed during removal, preventing unintended reuse.

Distal End Flushing Adapter

The new MAJ-2319 flushing adapter reduces the number of required flushing steps and ensures controlled distribution of detergent and disinfectant solution to the distal tip of the endoscope during manual reprocessing.

Waterproof One-Touch Connector

A new connector design reduces the effort required for setup prior to and in between cases. In addition, it is fully submersible, eliminating the need for a water-resistant cap and the associated risk of expensive repairs due to accidental immersion.

Extended view area of TJF-Q190V
View area of TJF-Q180V (for comparison)

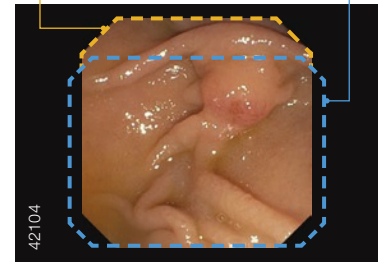


Image courtesy of Prof. Guido Costamagna



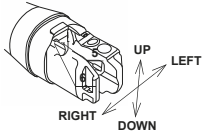
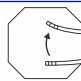
MAJ-2315 single-use distal cover for TJF-Q190V



MAJ-2319 distal end flushing adapter for TJF-Q190V



Specifications

Optical System	Field of view	100°
	Direction of view	Backwards 15°
	Depth of field	5.0–60 mm
Insertion Section	Distal end outer diameter	13.5 mm
	Distal end enlarged	
	Insertion tube outer diameter	11.3 mm
	Working length	1,240 mm
Instrument Channel	Channel inner diameter	4.2 mm
	Minimum visible distance	10 mm from the distal end
	Direction from which EndoTherapy accessories enter and exit the endoscopic image	



Bending Section	Angulation range	Up 120°
		Down 90°
		Right 110°
		Left 90°
Total Length	1,560 mm	
Compatible EVIS EXERA Systems	OLYMPUS CV-190 video system center	
	OLYMPUS CLV-190 xenon light source	

Specifications, design, and accessories are subject to change without any notice or obligation on the part of the manufacturer.