

OLYMPUS®

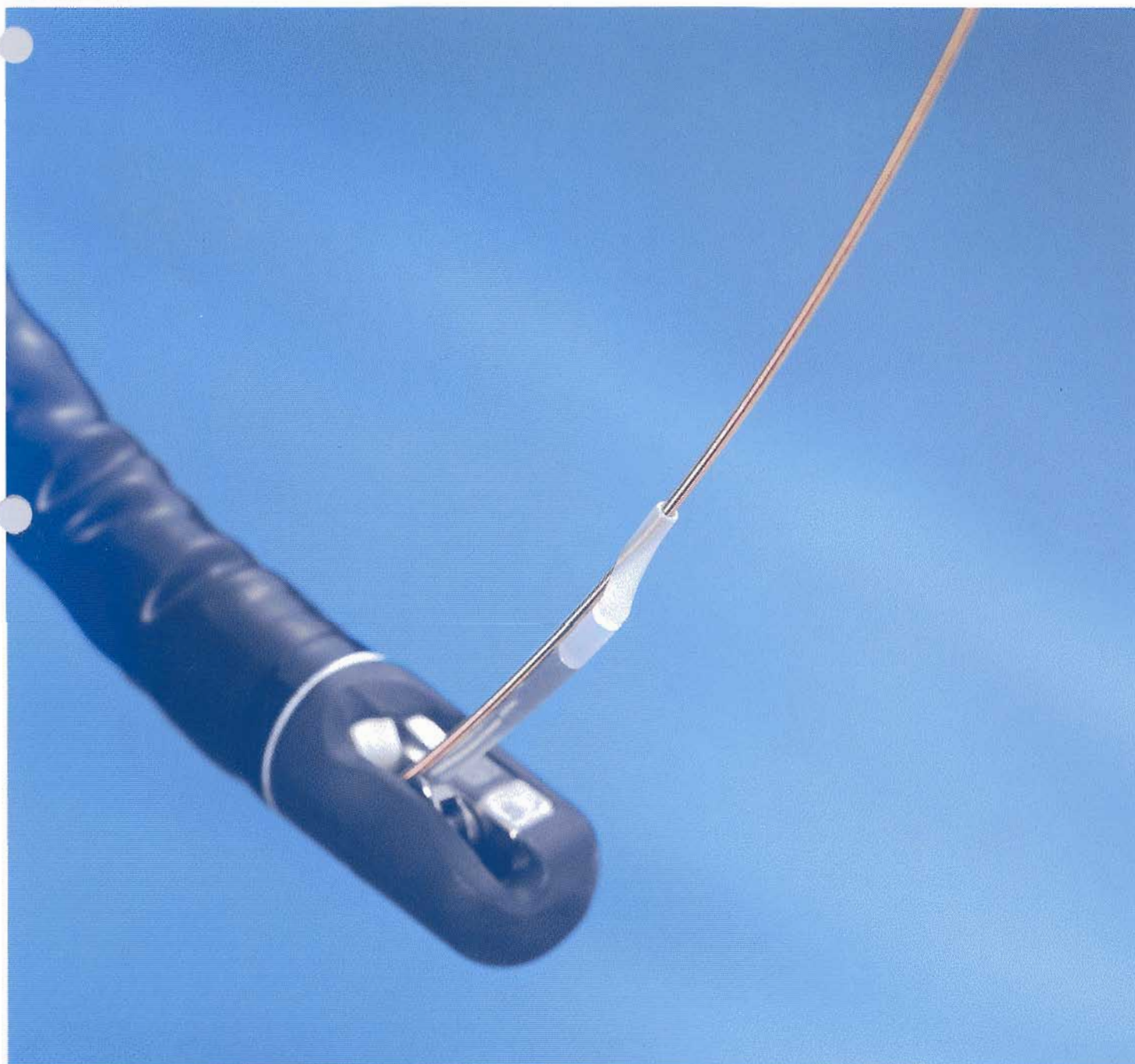
Olympus is about life. About photographic innovations that capture precious moments of life. About advanced medical technology that saves lives. About information- and industry-related products that make possible a better living. About adding to the richness and quality of life for everyone. Olympus. Quality products with a **FOCUS ON LIFE**

ULTRASONIC PROBE

NEW
PRODUCT

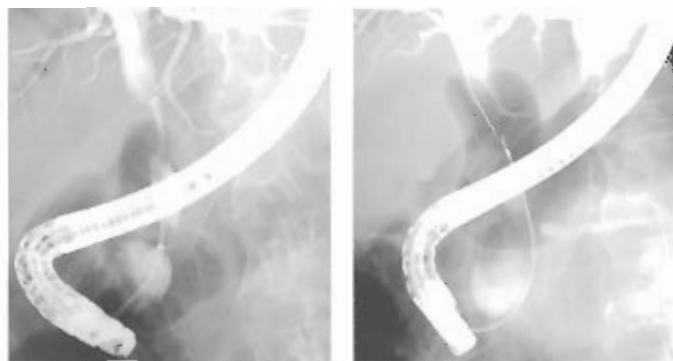
ULTRASONIC PROBE UM-G20-29R

Introducing a New Wire-Guided Ultrasonic Probe that Expands the Use of
Ultrasound to Narrow Lumens



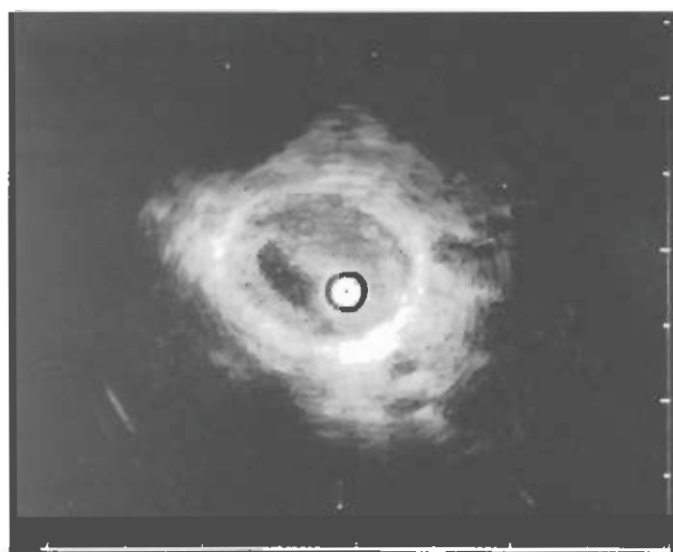
Ultrasonic Probe

UM-G20-29R



Ultrasound examination of the middle bile duct

Insertion through guidewire

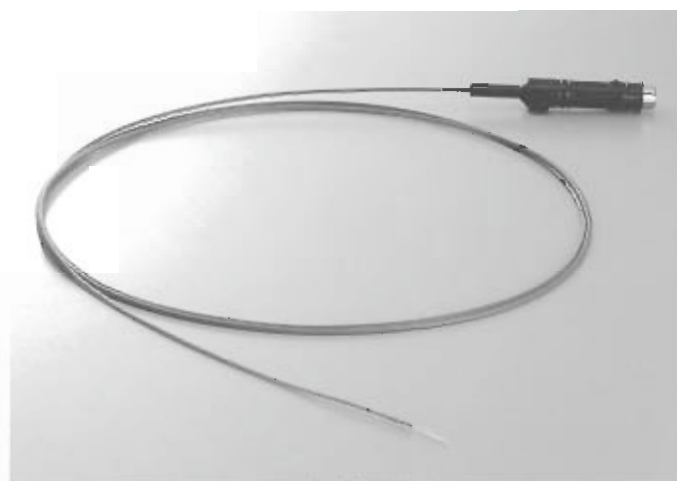


Delineates tumorous lesion at stricture

Easy Insertion Through a Standard Endoscope Expands Ultrasonic Examination Possibilities.

This latest addition to the OLYMPUS endoscopic ultrasound line-up increase the versatility of the system and helps make the ultrasound examinations to perform. Designed to pass down the channel of a standard endoscope, the UM-G20-29R Ultrasonic Probe allows examination of areas that were previously unreachable with a conventional ultrasonic endoscope. Thanks to the convenient guide wire, you'll be able to insert the UM-G20-29R into even the tightest strictures.

- Wire-guided insertion allows easy insertion even into a pancreatobiliary duct stricture.
- 2.9 mm outer diameter allows use with endoscope channel diameters of 3.2 mm or larger.
- Finely detailed high resolution ultrasound images from 20 MHz frequency.
- Seamless ultrasound examinations during routine endoscopic examinations when integrated with the complete OLYMPUS endoscopy system.



Specifications

Display Mode	B-Mode
Scanning Method	Mechanical,Radial Scanning
Scanning Direction	Perpendicular to the direction of insertion,360° Scanning
Frequency	20MHz
Contact Method	Direct Contact Method
Working Length	2050mm
Total Length	2140mm
Insertion Tube Outer Diameter	ø2.0mm(Distal end side 200mm) ø2.2mm(Proximal side)
Max.Outer Diameter	ø2.9mm
Guidewire Guide Port Length	10mm
Compatible Guidewire Outer Diameter	0.035inch or less

Olympus business areas



Medical and health-care area



Imaging and information area



Industrial applications area

OLYMPUS®

FOCUS ON LIFE

OLYMPUS OPTICAL CO., LTD.

Saiki Building, 23-2, Nishi-Shinjuku 1-chome, Shinjuku-ku, Tokyo, Japan

OLYMPUS OPTICAL CO. (EUROPA) GMBH.
Postfach 10 49 06, 20004 Hamburg 1-Wendensbasser 14-16, 20007 Hamburg, Germany

OLYMPUS AMERICA INC.
2 Corporate Center Drive, Melville, N.Y. 11747-3157, U.S.A.

OLYMPUS KEYMED

Keymed House, 5100c Road, Southend-on-Sea, Essex SSO 3QM, England

OLYMPUS SINGAPORE PTE LTD.

4915 River Valley Road #12 01 04, Valley Point Office Tower, Singapore 248375

OLYMPUS BEIJING REPRESENTATIVE OFFICE

Room No. 3406 Beijing Jing Guang Centre, Hu Jia Liu, Chao Yang Qu, Beijing, China

OLYMPUS MOSCOW CORPORATION

117211, Moscow, Malaya Kuznetskaya 19, bld 1, 2, Russia

OLYMPUS AUSTRALIA PTY. LTD.

1-164 Parkside Gully Road, Crowsleigh, Vic 3306, Australia