

OLYMPUS®

Your Vision, Our Future

EVIS LUCERA ELITE

EVIS LUCERA ELITE GASTROINTESTINAL VIDEOSCOPE

GIF-HQ290

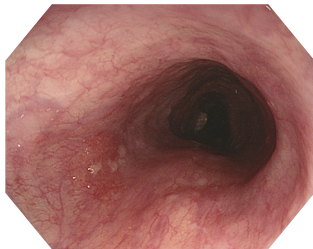
Amazing image quality for upper GI endoscopy



Main Features

Dual Focus

Dual focus, a unique OLYMPUS optical innovation, allows the user to select from two focus settings. With the simple push of a scope button, the desired depth of field for observation can be optimized to either the near field or normal field.



Normal focus mode



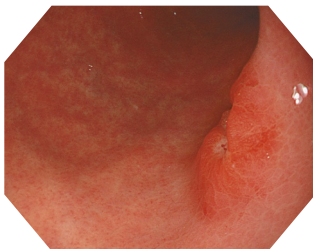
Near focus mode

Enhanced Image Quality

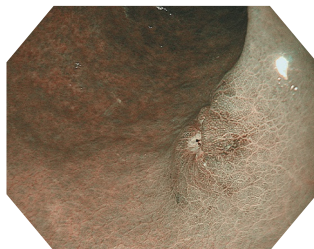
A new level of resolving power is achieved thanks to a new optical system. Combination of the scope and the system provides superior imaging.

NBI (Narrow Band Imaging)

NBI in EVIS LUCERA ELITE provides twice the viewable distance of EVIS LUCERA SPECTRUM. The greatly improved performance of NBI opens up exciting new clinical applications and reinforces NBI's position as the standard of care for GI endoscopy.



White Light



NBI

Water Jet

A forward water jet helps to keep the mucosa clear during observation and treatment in the upper GI tract.

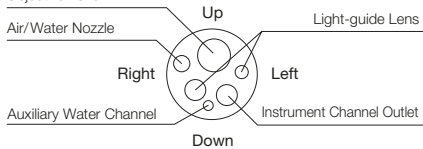


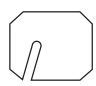
Waterproof One-touch Connector

A new connector design minimizes the effort required for setup prior to and in between cases. In addition, it is fully submersible and eliminates the need for a water-resistant cap and the associated risk of an expensive repair due to accidental immersion.



Specifications

Optical System	Field of view	Normal focus mode 140° Near focus mode 140°
	Direction of view	Forward viewing
	Depth of field	Normal focus mode 7-100 mm Near focus mode 3-7 mm
	Distal end outer diameter	10.2 mm
Insertion Section	Distal end enlarged	
	Objective Lens	
	Air/Water Nozzle	
	Light-guide Lens	
	Auxiliary Water Channel	
	Instrument Channel Outlet	
		
Insertion tube outer diameter		9.9 mm
Working length		1030 mm

Instrument Channel	Channel inner diameter	2.8 mm
	Minimum visible distance	3.0 mm from the distal end
	Direction from which endotherapy accessories enter and exit the endoscopic image	
Bending Section	Angulation range	Up 210°
		Down 90°
		Right 100°
		Left 100°
Total Length	1350 mm	
Compatible EVIS LUCERA System	Video System Center OLYMPUS CV-290 Xenon Light Source OLYMPUS CLV-290SL, CLV-290	

Specifications, design and accessories are subject to change without any notice or obligation on the part of the manufacturer.