

**OLYMPUS**

Your Vision, Our Future

**VISERA  
ELITE**

**URETERO-RENO FLEXIBLE VIDEOSCOPE**

**URF-V2**

**Highest Image Quality in Superslim 8.4 Fr Shaft.**



## HIGHEST VIDEOSCOPE IMAGE QUALITY IN SUPERSLIM 8.4 FR SHAFT



6500

“

The digital technology for flexible ureteroscopy is one of the major improvements for a better treatment of kidney stones and urothelial tumor ablation.

”

*Prof. Olivier Traxer, Tenon Hospital, Paris, France*



### **8.4 Fr Slim and Stiff Shaft for Facilitating Access and Maneuverability**

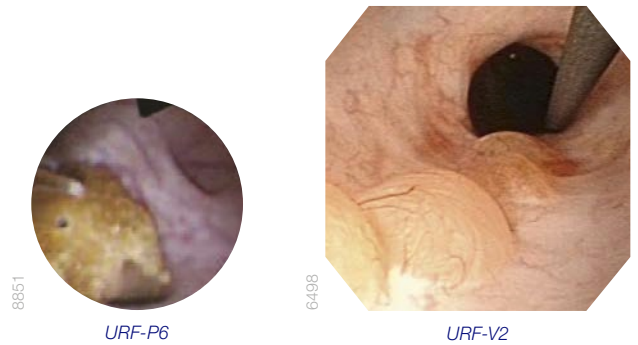
- Slim URF-V2 fits into 10/12 Fr access sheath allowing for access in tight ureters
- Using the URF-V2 in combination with a 12/14 Fr access sheath ensures the clearest visualization thanks to improved flow
- Increased shaft stiffness for improved steering of the ureteroscope in order to reach lower pole calyx easily

8.4 Fr

## Highest Image Quality for Faster Stone Treatment and More Accurate Tumor Detection with NBI

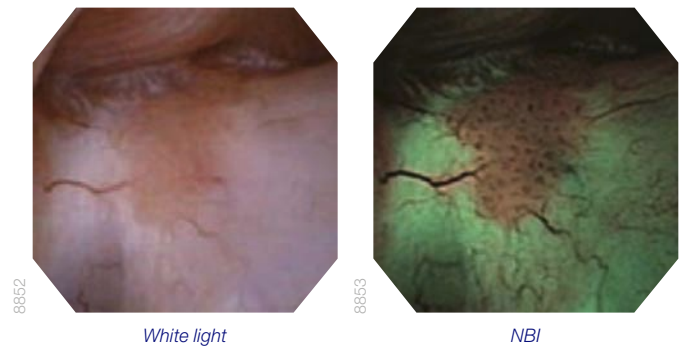
### Stone

Chip-on-the-tip technology allows for sharp visualization and larger images compared to fiberscope technology and makes long stone treatment procedures up to 20% faster and laser activation safer.



### Tumor

NBI as optical image enhancement technology is of substantial help in better identifying upper tract tumors due to improved visibility of vessel structures.



## Improved Maneuverability to Reach Everywhere



### 275° Wide Angulation Range

Deflection capabilities of 275° up and down allow for outstanding visualization of lower renal calyx as well as upper and middle calyces.



### Unique Insertion Tube Rotation for More Comfort

The 120° rotation function allows the operator to change the shaft's angle by rotating a ring on the handle. This potentially allows for longer laser activation making treatment of large stone burdens feasible, more precise, and more comfortable.

**Specifications**



**URF-V2/URF-V2R**

<b>Optical system</b>	Field of view	80°
	Direction of view	Forward viewing
	Depth of field	1.5–50 mm
<b>Insertion tube</b>	Distal end, outer diameter	8.5 Fr (2.83 mm)
	Shaft, outer diameter	8.4 Fr (2.8 mm)
	Working length	670 mm
<b>Instrument channel</b>	Inner channel, diameter	3.6 Fr (1.2 mm)
<b>Bending section</b>	Angulation range	Up 275° Down 275°
	<b>Total length</b>	980 mm

**Standard Set – URF-V2 (N4506330)**

<b>URF-V2</b>	Flexible video ureteroscope	1
<b>MAJ-579</b>	Biopsy valve	10
<b>MAJ-891</b>	Forceps/irrigation plug	1
<b>MAJ-1538</b>	Sterilization Cap	1

<b>MH-507</b>	Channel-opening cleaning brush	1
<b>BW-15SH</b>	Suction connector cleaning brush	1
<b>BW-400B</b>	Single-use, single-ended cleaning brush	1

**Endourology Products**

**UroPass access sheath – ureteral access sheath**



**Irri-Flo II – irrigation pump for improved flow and visualization**



**VISERA ELITE System**



**Accessories**

**Adjustable biopsy port seal – BPS-A**



**Adjustable biopsy port seal Y-adapter – BPS-Y**



Specifications, design, and accessories are subject to change without any notice or obligation on the part of the manufacturer.