

Endoscope Overview 2019



EVIS LUCERA
ELITE

Imagine ...

**An Endoscope
Acting like a Compass.**

Medical Endoscopes

Medical Video Endoscopes	4
Video Gastrosopes	4
Video Colonoscopes	6
Video Duodenoscopes	8
Video Choledochoscope	8
Video Enteroscopes	8
Capsule Endoscope	8
Video Bronchoscopes	10
Video Pleuroscope (Medical Thoracoscopy)	10
Medical Fiber Endoscopes	12
Gastrointestinal Fiberscope	12
Fiber Bronchoscopes	12
Endoscopy Integration	14
Endoscopic Ultrasound	16
Ultrasonic Videoscopes for EUS	16
Ultrasonic Endoscopes for EBUS	16
Ultrasonic Miniature Probes	18

Explore the evidence at: www.olympus.co.uk/proven

Not all endoscopes are available in every country.
Please contact your local Olympus representative for more information.

Medical Endoscopes

Medical Video Endoscopes

	Insertion Tube OD (mm)	Distal End OD (mm)	Channel ID (mm)	Bending (Up/Down)	Bending (Left/Right)	Working Length (mm)	Field of View	Depth of Field (mm)	NBI	Comments
Video Gastroscopes										
GIF-HQ290*	9.9	10.2	2.8	210°/90°	100°/100°	1030	140° (near) 140° (normal)	3 – 7 (near) 7 – 100 (normal)	✓	DF, OT, WJ, HDTV
GIF-H290Z*	9.6	9.9	2.8	210°/90°	100°/100°	1030	95° (tele) 140° (wide)	1.5 – 3 (tele) 7 – 100 (wide)	✓	Zoom, OT, WJ, HDTV
GIF-H290EC*	9.6	9.7	2.2	210°/90°	100°/100°	1030	140°	7 – 100	✓	OT, WJ, HDTV, EC
GIF-H290*	8.9	8.9	2.8	210°/90°	100°/100°	1030	140°	3 – 100	✓	OT, HDTV
GIF-XP290N*	5.8	5.4	2.2	210°/90°	100°/100°	1100	140°	3 – 100	✓	Transnasal, OT, HF compatible
GIF-PQ260	7.7	7.9	2.0	210°/90°	100°/100°	1030	140°	3 – 100	✓	–
GIF-FQ260Z**	10.5	11.0	2.8	210°/90°	100°/100°	1030	60° (tele) 140° (wide) 140° (AFI)	2 – 3.5 (tele) 7 – 100 (wide) 7 – 100 (AFI)	–	AFI, Zoom
GIF-2TQ260M	11.7	11.7	2x 3.2	210°/90° Sec.: 70°/70°	100°/100°	1030	140°	3 – 100	✓	WJ, Multi-bending

* with CV-290 only ** with CV-290/-260(SL) only

OT = One-touch Connector DF = Dual Focus WJ = WaterJet
EC = Endocytoscope AFI = Auto-Fluorescence Imaging

Medical Endoscopes

	Insertion Tube OD (mm)	Distal End OD (mm)	Channel ID (mm)	Bending (Up/Down)	Bending (Left/Right)	Working Length (mm)	Field of View	Depth of Field (mm)	NBI	Comments
Video Colonoscopes										
CF-HQ290L/I*	12.8	13.2	3.7	180°/180°	160°/160°	1680/1330	160° (near) 170° (normal)	4 – 9 (near) 9 – 100 (normal)	✓	DF, OT, RIT, SG, WJ, HDTV
CF-HQ290ZL/I*	12.8	13.2	3.7	180°/180°	160°/160°	1680/1330	90° (tele) 170° (wide)	2 – 3 (tele) 7 – 100 (wide)	✓	OT, RIT, WJ, HDTV, Zoom
CF-H290ECI*	12.8	12.8	3.2	180°/180°	160°/160°	1330	140°	7 – 100	✓	OT, RIT (HFT, VS), WJ, HDTV, EC
CF-H290L/I*	12.0	12.2	3.2	180°/180°	160°/160°	1680/1330	170°	5 – 100	✓	OT, RIT, WJ, HDTV
PCF-H290DL/I*	11.8	11.7	3.2	180°/180°	160°/160°	1680/1330	170°	5 – 100	✓	OT, RIT, SG, WJ, HDTV
PCF-H290ZL/I*	11.8	11.7	3.2	180°/180°	160°/160°	1680/1330	85° (tele) 170° (wide)	1 – 2 (tele) 7 – 100 (wide)	✓	HDTV, OT, RIT, WJ, Zoom
PCF-H290L/I*	11.5	11.7	3.2	180°/180°	160°/160°	1680/1330	170°	5 – 100	✓	OT, RIT, WJ, HDTV
PCF-H290TL/I*	10.5	9.8	3.2	210°/180°	160°/160°	1680/1330	140°	5 – 100	✓	CF, OT, RIT (HFT, VS), WJ, HDTV
CF-FH260AZL**	13.2	14.8	3.2	180°/180°	160°/160°	1680	80° (tele) 140° (wide) 140° (AFI)	2 – 3 (tele) 7 – 100 (wide) 5 – 100 (AFI)	✓	HDTV, AFI, WJ, Zoom, VS
PCF-PQ260L/I	9.2	9.2	2.8	180°/180°	160°/160°	1680/1330	140°	5 – 100	✓	RIT (HFT, PB)

*with CV-290 only **with CV-290/-260(SL) only

OT = One-touch Connector DF = Dual Focus CF = Close Focus
 WJ = WaterJet RIT = Responsive Insertion Technology SG = ScopeGuide
 VS = Variable Stiffness HFT = High Force Transmission PB = Passive Bending
 EC = Endocytoscope AFI = Auto-Fluorescence Imaging

Medical Endoscopes

	Insertion Tube OD (mm)	Distal End OD (mm)	Channel ID (mm)	Bending (Up/Down)	Bending (Left/Right)	Working Length (mm)	Field of View	Depth of Field (mm)	NBI	Comments
Video Duodenoscopes										
TJF-Q290V*	11.3	13.5	4.2	120°/90°	110°/90°	1240	100°/15° (retro)	5 – 60	✓	OT, HFT, V-System
TJF-260V	11.3	13.5	4.2	120°/90°	120°/90°	1240	100°	5 – 60	✓	V-System
JF-260V	11.3	12.6	3.7	120°/90°	120°/90°	1240	100°	5 – 60	✓	V-System
Video Choledochoscope										
CHF-V	5.2	4.9	2.0	160°/130°	–	380	120°	3 – 50	✓	–
Video Enteroscopes										
SIF-H290S*	9.2	9.2	3.2	180°/180°	160°/160°	1520	140°	3–100	✓	OT, RIT (HFT, PB), HDTV
SIF-Q260	9.2	9.2	2.8	180°/180°	160°/160°	2000	140°	5–100	✓	–
Capsule Endoscope										
EC-S10***	11.0	11.0	–	–	–	26	160°	0–20	–	–

*with CV-290 only ***with EC-10 ENDOCAPSULE system only

OT = One-touch Connector RIT = Responsive Insertion Technology
HFT = High Force Transmission PB = Passive Bending

Medical Endoscopes

	Insertion Tube OD (mm)	Distal End OD (mm)	Channel ID (mm)	Bending (Up/Down)	Rotation Function (Left/Right)	Working Length (mm)	Field of View	Depth of Field (mm)	NBI	Comments
Video Bronchoscopes										
BF-H290*	5.7	6.0	2.0	210°/130°	120°/120°	600	120°	3 – 100	✓	HDTV, OT, ROTATION
BF-Q290*	4.9	4.8	2.0	210°/130°	120°/120°	600	120°	2 – 100	✓	OT, ROTATION
BF-P290*	4.1	4.2	2.0	210°/130°	120°/120°	600	110°	2 – 50	✓	OT, ROTATION
BF-XP290*	2.8	3.1 ^o	1.2	210°/130°	120°/120°	600	110°	2 – 50	✓	OT, ROTATION
BF-1TQ290*	6.0	5.9	3.0	180°/130°	120°/120°	600	120°	2 – 100	✓	OT, ROTATION
BF-MP290F*	3.7	3.0	1.7	210°/130°	120°/120°	600	90°	2 – 50	–	OT, ROTATION
BF-1T260	6.0	5.9	2.8	180°/130°	–	600	120°	2 – 100	–	–
BF-F260**	5.4	5.5	2.0	180°/130°	–	600	120°	3 – 100	–	AFI
Video Pleuroscope (Medical Thoracoscopy)										
LTF-260**	7.0	6.9	2.8	160°/130°	–	270	120°	3 – 100	✓	Autoclavable

* with CV-290 only ** with CV-290/-260(SL) only
^o tapered part of distal end 2.9 mm

OT = One-touch Connector ROTATION = Insertion Tube Rotation Function
 AFI = Auto-Fluorescence Imaging

Medical Endoscopes

Medical Fiber Endoscopes

	Insertion Tube OD (mm)	Distal End OD (mm)	Channel ID (mm)	Bending (Up/Down)	Bending (Left/Right)	Working Length (mm)	Field of View	Depth of Field (mm)	Comments
Gastrointestinal Fiberscope									
CHF-BP30	3.4	3.1	1.2	160°	130°	1870	90°	1 – 150	Baby scope
Fiber Bronchoscopes									
BF-1T60	6.0	5.9	3.0	180°/130°	–	600	120°	3 – 50	–
BF-P60	5.0	4.9	2.2	180°/130°	–	600	120°	3 – 50	–
BF-XP60	2.8	2.8	1.2	180°/130°	–	600	90°	2 – 50	–
BF-3C40	3.6	3.3	1.2	180°/130°	–	550	120°	3 – 50	–

Endoscopy Integration

Olympus' systems offer a complete platform of solutions for endoscopy, consisting of modular components that are combined to meet the individual needs of the hospital. Utmost support throughout the workflow from patient reception to the examination, via the reprocessing and recovery areas, ending in the doctor's office and training room facilities.



Examination Room

A high level of ergonomics, efficiency, and communication in a modern and friendly ambience.

- Optimized workspace and patient comfort
- Integrated HD documentation system
- Saving space, examination, and cleaning time



Reprocessing Area

Hygiene supports and secures the endoscope's workflow with full traceability and documentation of all relevant reprocessing steps.

- ETD Double and ETD4 washer disinfectors
- EDC Plus Drying and storage cabinets



Recovery Area

Patient comfort and safety in perfection – a central overview of the status of the rooms, support smooth processes and a stressless atmosphere.

- Access to status of endoscopy room
- Patient-care documentation for recovery nurse



Doctor's Office

In the office but with an optimal audio/video connection to the examination rooms. Access from the PC to all data and images and reporting system.

- Access to centralized patient/procedure information
- Audio/video connection to examination rooms
- Tools for activity and cost analysis



Training / Meeting Room

The media center for training, courses, and seminars with advanced video management, including live video and bidirectional communication from examination rooms.

- Access/display of departmental activity information
- IP audio/video routing and multi-display functionality

Endoscopic Ultrasound

Endoscopic Ultrasound									
	Insertion Tube OD (mm)	Channel ID (mm)	Bending (Up/Down Left/Right)	Working Length (mm)	Ultrasound Field of View	Endoscopic Field of View (Forward/Oblique)	Depth of Field (mm)	Frequency (MHz)	Scanning Mode
Ultrasonic Videoscopes for EUS									
GF-UE260-AL5	11.8	2.2	130°/90° 90°/90°	1250	360°	100°/55°	3 – 100	5/6/7.5/10*	Electronic 360° radial array
TGF-UC260J	12.6	3.7	180°/90° 90°/90°	1245	90°	120°/0°	3 – 100	5/6/7.5/10/12*	Forward viewing, electronic curved linear array
GF-UCT260	12.6	3.7	180°/90° 90°/90°	1250	180°	100°/55°	3 – 100	5/6/7.5/10*	Electronic curved linear array
Ultrasonic Endoscopes for EBUS									
BF-UC290F**	6.3	2.2	160°/70° –	600	65°	80°/20°	2-50	5/6/7.5/10/12*	Electronic curved linear array
BF-UC260FW**	6.3	2.2	120°/90° –	600	60°	80°/35°	2 – 50	5/6/7.5/10/12*	Electronic curved linear array

* with EU-ME2. Please contact your Olympus representative for compatibility with other systems.

** fiber videoscope for the best ratio between outer diameter and working channel size

Endoscopic Ultrasound

	Frequency (MHz)	Working Length (mm)	Insertion Tube OD (mm)	Comp. Biopsy Channel (mm)	Compatible with	Compatible Biopsy Channel (mm) for Sheath	Scanning Mode
Ultrasonic Miniature Probes							
UM-2R/3R	12/20	2050	2.5	2.8	MH-246R Balloon Sheath	3.7	Mechanical radial
UM-S20-17S	20	2150	max. 1.8	2.0	K-201 / K-202 GuideSheathKit	2.0	Mechanical radial
UM-S20-20R	20	2050	max. 2.0	2.2*	K-203 / K-204 GuideSheathKit	2.6	Mechanical radial
UM-BS20-26R	20	2050	Use only with balloon sheath		MAJ-643R Balloon Sheath	2.8	Mechanical radial
UM-G20-29R***	20	2050	max. 2.9	3.2	Not used with balloon sheath		Mechanical radial
UM-DG20-31R***	20	2050	max. 3.1	3.7	Not used with balloon sheath		Mechanical helical for Dual Plane Reconstruction (DPR)
UM-DP12-25R	12	2050	2.5	2.8	Not used with balloon sheath		Mechanical helical for Dual Plane Reconstruction (DPR)
UM-DP20-25R	20	2050	2.5	2.8	Not used with balloon sheath		Mechanical helical for Dual Plane Reconstruction (DPR)

*** equipped with a 0.035" guidewire port at the distal end
*2.0 mm in bronchoscopes

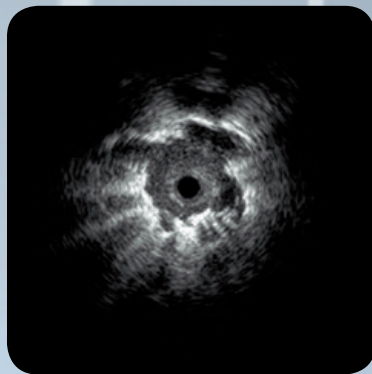
Advancing the Art of Bronchoscopy

Finding and Sampling of Peripheral Pulmonary Lesions

Peripheral Pulmonary Lesion

Real-time confirmation of the lesion through endobronchial ultrasound using an EBUS miniature probe.

Combining EBUS with a GuideSheath enables easy and repeated access to the lesion via sampling devices.



23554

ESG-300



Real Power ... to Inspire Confidence

In developing the ESG-300, Olympus has created a product dedicated to the needs of the endoscopist while overcoming the complexity associated with multipurpose generators and focusing on providing a simple, safe, and smart source of energy.

ESG-300: Generating Simplicity

www.olympus.co.uk/esg-300



E0429551UK · 02/19 · ABC

Subject to change without notice. Liability for errors and omissions excepted.

OLYMPUS

OLYMPUS KEYMED

KeyMed House, Stock Road, Southend-on-Sea,
Essex, SS2 5QH, UK
Telephone: +44 (0)1702 616333
info@olympus.co.uk www.olympus.co.uk